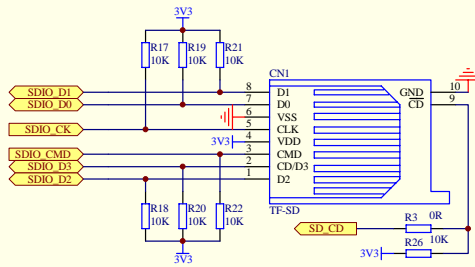
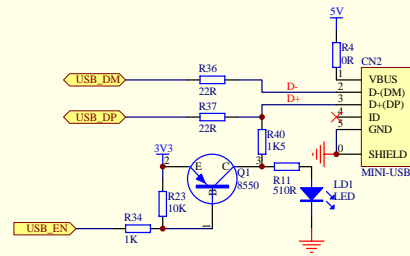


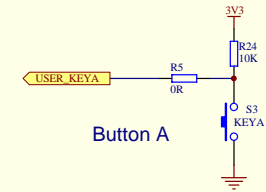
| | | |
|-------------------------|-----------------------|--|
| Title | | |
| www.PowerMCU.com | | |
| Size | Number | Revision |
| B | HY - MiniSTM32 | |
| Date: | 7-Nov-2010 | Sheet of |
| File: | 电源管理 | HY-MiniSTM32-HY-MiniSTM32-PCB-1001.Brd |



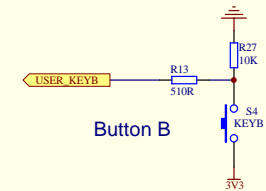
SD Card



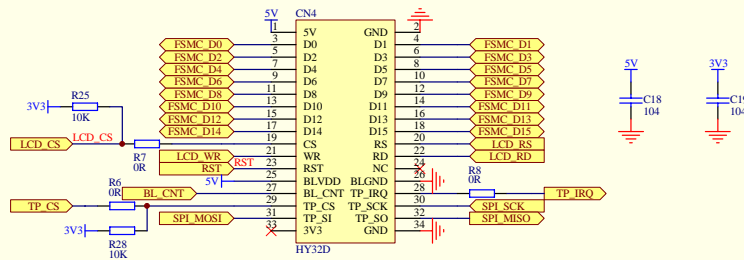
USB Device



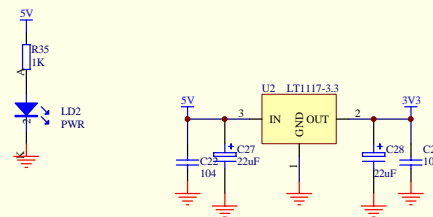
Button A



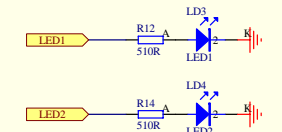
Button B



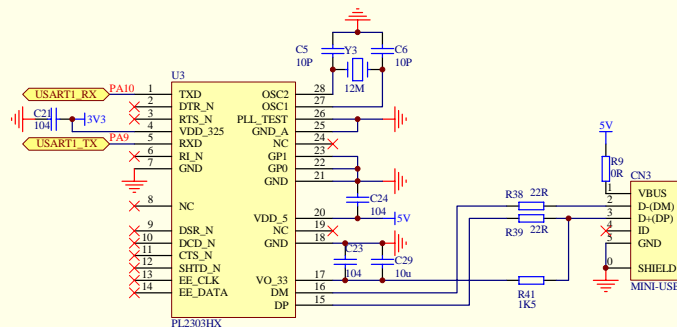
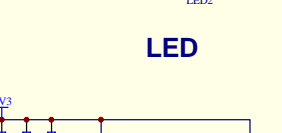
LCD



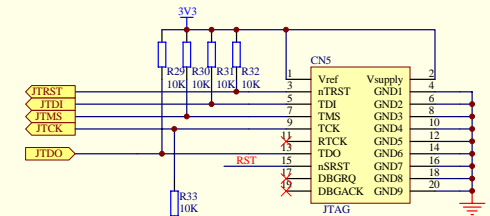
Power



LED



USB to RS232



JTAG

| | | |
|--|--|----------|
| Title | | |
| www.PowerMCU.com | | |
| Size | Number | Revision |
| B | HY - MiniSTM32 | |
| Date: | 7-Nov-2010 | |
| File: | F:\数字电子\HY-MiniSTM32\HY-MiniSTM32\HY-MiniSTM32.BY: | |
| Sheet of | | |